

HA-EV



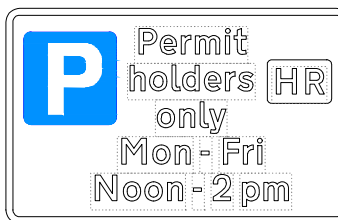
| | | | |
|---------------|--------------------------|-----------|--------------------|
| Scheme Ref. | CPZ - EV BAYS | x-height | 15.0 |
| Sign Ref. | HA-EV | SIGN FACE | |
| Letter colour | BLACK | Width | 290mm |
| Background | WHITE | Height | 345mm |
| Border | BLACK | Area | 0.10m ² |
| Material | Class R3B Microprismatic | | |

EV-S



| | | | |
|---------------|--------------------------|-----------|--------------------|
| Scheme Ref. | EV-SIGN | x-height | 15.0 |
| Sign Ref. | EV-S | SIGN FACE | |
| Letter colour | WHITE | Width | 320mm |
| Background | DARK GREEN | Height | 115mm |
| Border | WHITE | Area | 0.04m ² |
| Material | Class R3B Microprismatic | | |

HA1

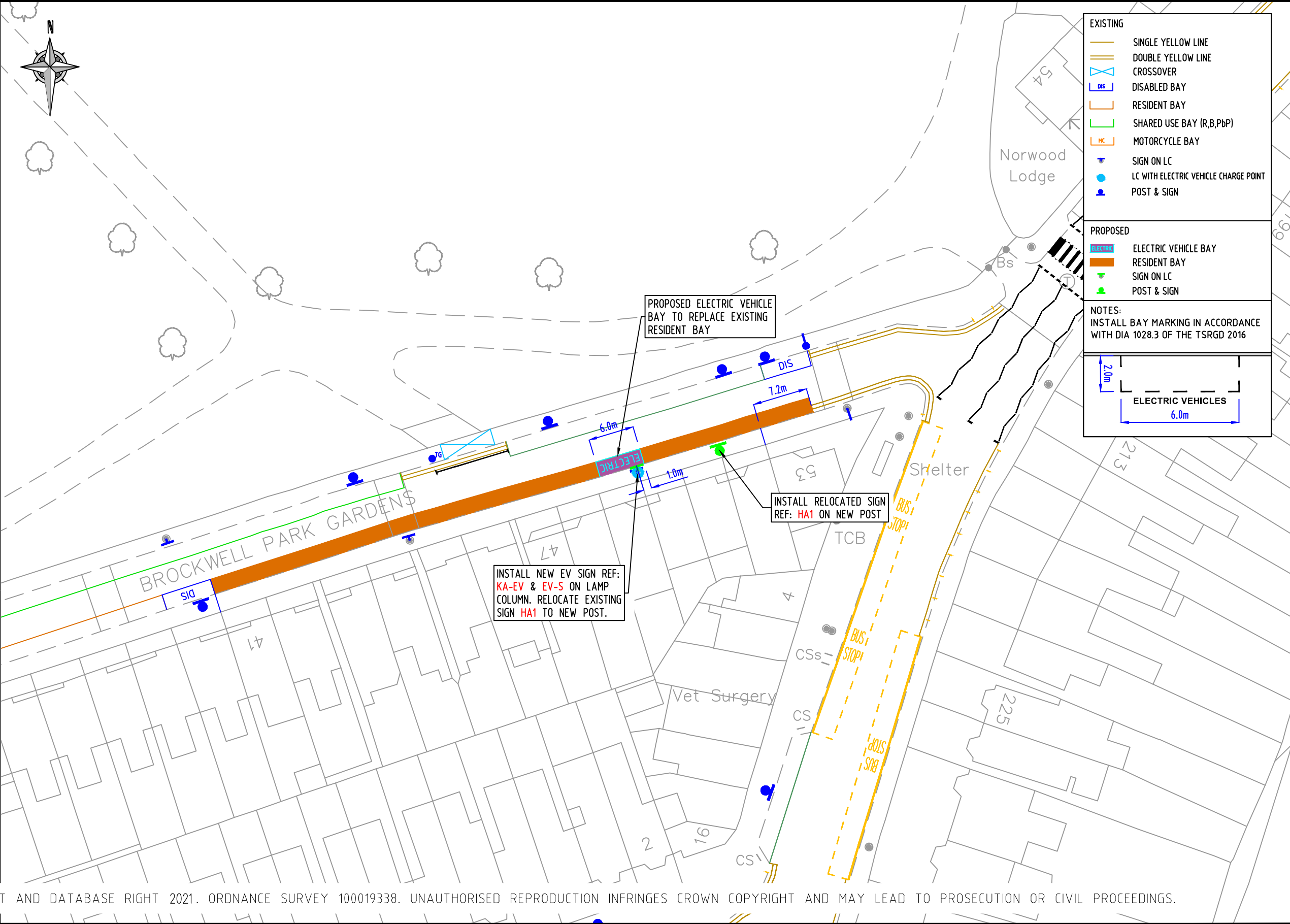


| | | | |
|---------------|--------------------------|-----------|--------------------|
| Scheme Ref. | CPZ - EV SIGN | x-height | 15.0 |
| Sign Ref. | HA | SIGN FACE | |
| Letter colour | BLACK | Width | 290mm |
| Background | WHITE | Height | 175mm |
| Border | BLACK | Area | 0.05m ² |
| Material | Class R3B Microprismatic | | |

| EXISTING | |
|----------|---------------------------------------|
| | SINGLE YELLOW LINE |
| | DOUBLE YELLOW LINE |
| | CROSSOVER |
| | DISABLED BAY |
| | RESIDENT BAY |
| | SHARED USE BAY (R,B,PbP) |
| | MOTORCYCLE BAY |
| | SIGN ON LC |
| | LC WITH ELECTRIC VEHICLE CHARGE POINT |
| | POST & SIGN |

| PROPOSED | |
|----------|----------------------|
| | ELECTRIC VEHICLE BAY |
| | RESIDENT BAY |
| | SIGN ON LC |
| | POST & SIGN |

NOTES:
INSTALL BAY MARKING IN ACCORDANCE WITH DIA 1028.3 OF THE TSRGD 2016



© CROWN COPYRIGHT AND DATABASE RIGHT 2021. ORDNANCE SURVEY 100019338. UNAUTHORISED REPRODUCTION INFRINGES CROWN COPYRIGHT AND MAY LEAD TO PROSECUTION OR CIVIL PROCEEDINGS.

NOTES:

| REV | DESCRIPTION | DRAWN | SIG | DATE | CHKD | SIG | DATE | APP | SIG | DATE |
|-----|-------------|-------|-----|------|------|-----|------|-----|-----|------|
| | | | | | | | | | | |
| | | | | | | | | | | |
| | | | | | | | | | | |
| | | | | | | | | | | |

PARKING, STREET MANAGEMENT AND COMMERCIAL,
3RD FLOOR, CIVIC CENTRE
6 BRIXTON HILL
LONDON, SW2 1EG
020 7926 9000

| | | | | | | |
|-------|----------|----------------|-----------------------------------|-------|----------|---|
| DRAWN | BC | PROJECT | PROPOSED ELECTRIC VEHICLE PARKING | | | |
| CHKD | GWA | DRAWING TITLE | BROCKWELL PARK ROAD (CPZ 'H') | | | |
| APP | LM | CLASSIFICATION | TMO | PAPER | A3 | |
| | | SCALE | 1:500 | | | |
| DATE | 04.11.21 | DRAWING NO | DES-CPZ-EVB-1003-001-23 | | REVISION | - |