


P 
Electric vehicle recharging point
Permit holders only **RR**
Max stay 24 hours
No return within 2 hours

| | | | |
|---------------|--------------------------|-----------|--------------------|
| Scheme Ref. | CPZ R - EV SIGN | x-height | 15.0 |
| Sign Ref. | RA-EV | SIGN FACE | |
| Letter colour | BLACK | Width | 290mm |
| Background | WHITE | Height | 345mm |
| Border | BLACK | Area | 0.10m ² |
| Material | Class R38 Microprismatic | | |

You must be actively charging to park in this bay

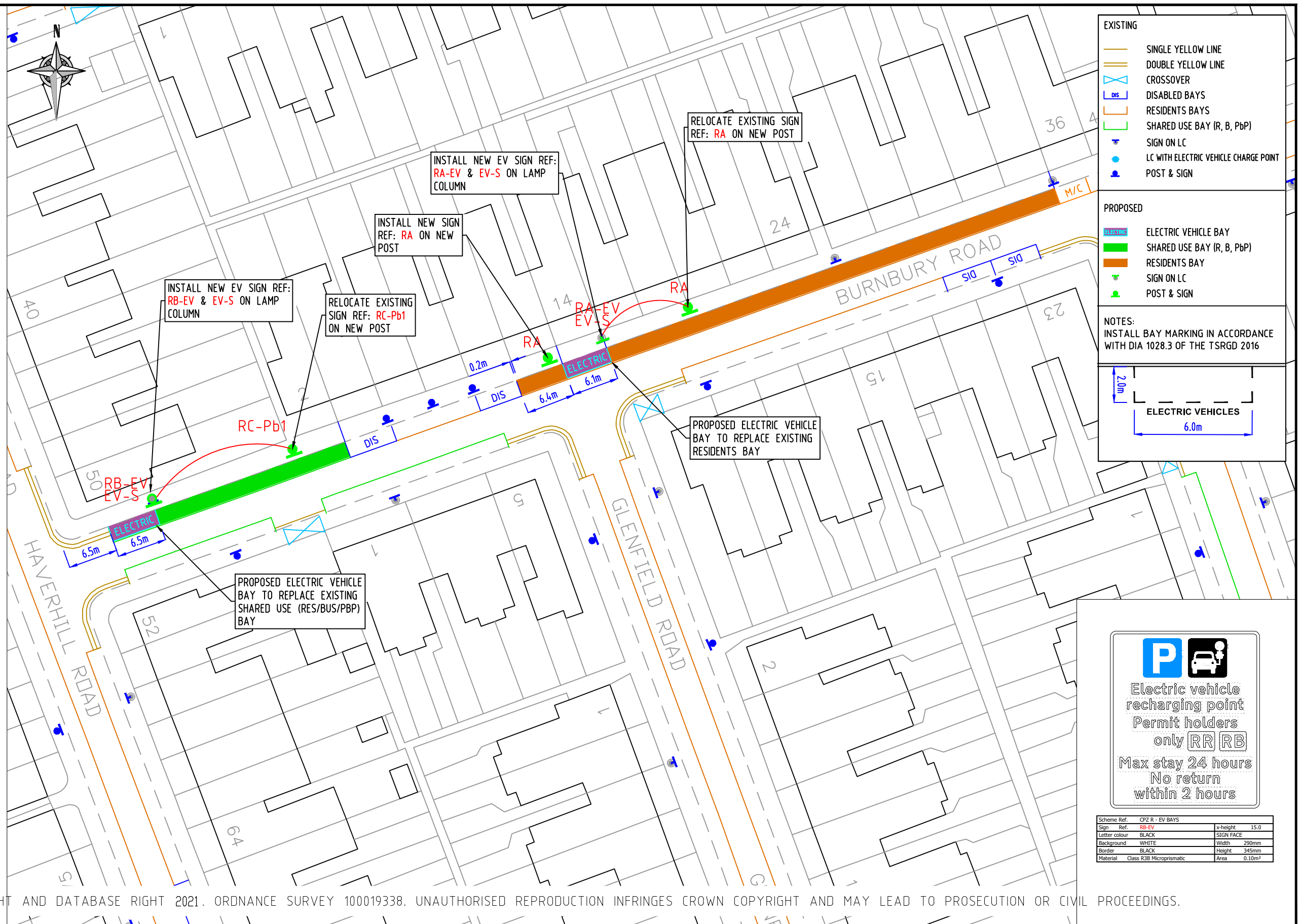
| | | | |
|---------------|--------------------------|-----------|--------------------|
| Scheme Ref. | CPZ R - EV SIGN | x-height | 15.0 |
| Sign Ref. | EV-S | SIGN FACE | |
| Letter colour | BLACK | Width | 320mm |
| Background | WHITE | Height | 115mm |
| Border | BLACK | Area | 0.04m ² |
| Material | Class R38 Microprismatic | | |

P **Mon - Fri 10 am - Noon**
Permit holders **RR RB**
or
Pay by phone 0207 005 0055
quoting location 83847
Max stay 1 hour

| | | | |
|---------------|--------------------------|-----------|--------------------|
| Scheme Ref. | CPZ R - EV SIGN | x-height | 15.0 |
| Sign Ref. | RC-Pb1 | SIGN FACE | |
| Letter colour | BLACK | Width | 290mm |
| Background | WHITE | Height | 360mm |
| Border | BLACK | Area | 0.10m ² |
| Material | Class R38 Microprismatic | | |

P **Permit holders only** **RR**
Mon - Fri 10 am - Noon

| | | | |
|---------------|--------------------------|-----------|--------------------|
| Scheme Ref. | CPZ R - EV SIGN | x-height | 15.0 |
| Sign Ref. | RA | SIGN FACE | |
| Letter colour | BLACK | Width | 280mm |
| Background | WHITE | Height | 175mm |
| Border | BLACK | Area | 0.05m ² |
| Material | Class R38 Microprismatic | | |



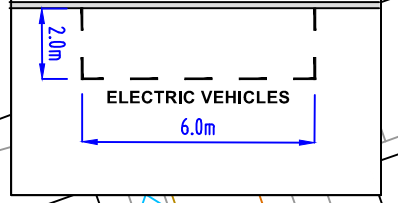
EXISTING


- SINGLE YELLOW LINE
- DOUBLE YELLOW LINE
- CROSSOVER
- DIS
- RESIDENTS BAYS
- SHARED USE BAY (R, B, PbP)
- SIGN ON LC
- LC WITH ELECTRIC VEHICLE CHARGE POINT POST & SIGN

PROPOSED

- ELECTRIC VEHICLE BAY
- SHARED USE BAY (R, B, PbP)
- RESIDENTS BAY
- SIGN ON LC
- POST & SIGN

NOTES:
 INSTALL BAY MARKING IN ACCORDANCE WITH DIA 1028.3 OF THE TSRGD 2016



P 
Electric vehicle recharging point
Permit holders only **RR RB**
Max stay 24 hours
No return within 2 hours

| | | | |
|---------------|--------------------------|-----------|--------------------|
| Scheme Ref. | CPZ R - EV BAYS | x-height | 15.0 |
| Sign Ref. | RB-EV | SIGN FACE | |
| Letter colour | BLACK | Width | 290mm |
| Background | WHITE | Height | 345mm |
| Border | BLACK | Area | 0.10m ² |
| Material | Class R38 Microprismatic | | |

© CROWN COPYRIGHT AND DATABASE RIGHT 2021. ORDNANCE SURVEY 100019338. UNAUTHORISED REPRODUCTION INFRINGES CROWN COPYRIGHT AND MAY LEAD TO PROSECUTION OR CIVIL PROCEEDINGS.

NOTES:

| REV | DESCRIPTION | DRAWN | SIG | DATE | CHKD | SIG | DATE | APP | SIG | DATE |
|-----|-------------|-------|-----|------|------|-----|------|-----|-----|------|
| | | | | | | | | | | |
| | | | | | | | | | | |
| | | | | | | | | | | |
| | | | | | | | | | | |
| | | | | | | | | | | |
| | | | | | | | | | | |
| | | | | | | | | | | |
| | | | | | | | | | | |
| | | | | | | | | | | |
| | | | | | | | | | | |

Lambeth
 PARKING, STREET MANAGEMENT AND COMMERCIAL,
 3RD FLOOR, CIVIC CENTRE
 6 BRIXTON HILL
 LONDON, SW2 1EG
 020 7926 9000

| | | | | | |
|-------|----------|----------------|-----------------------------------|----------|----|
| DRAWN | TF | PROJECT | PROPOSED ELECTRIC VEHICLE PARKING | | |
| CHKD | GWA | DRAWING TITLE | BURNBURY ROAD (CPZ 'R') | | |
| APP | LM | CLASSIFICATION | TMO | PAPER | A3 |
| | | SCALE | 1:500 | | |
| DATE | 17.03.21 | DRAWING NO | DES-CPZ-EVB-1000-001-02-03 | REVISION | - |